

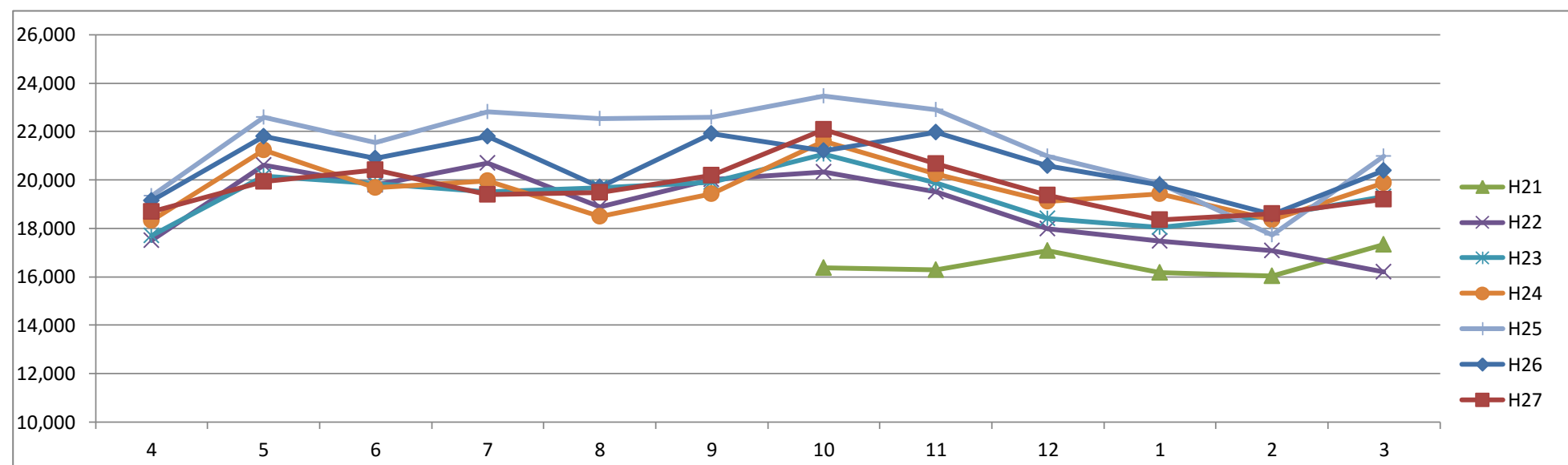
かもめバス利用状況統計

鳥羽市定期船課

①乗車人員

(人)

年	月	4	5	6	7	8	9	10	11	12	1	2	3	合計
H21								16,363	16,291	17,089	16,164	16,025	17,319	99,251
H22		17,496	20,610	19,786	20,700	18,884	20,004	20,338	19,500	17,979	17,467	17,089	16,196	226,049
H23		17,709	20,151	19,850	19,510	19,684	19,904	21,073	19,878	18,407	18,032	18,529	19,315	232,042
H24		18,310	21,242	19,688	19,962	18,480	19,429	21,585	20,245	19,125	19,416	18,342	19,865	235,689
H25		19,326	22,578	21,531	22,820	22,542	22,575	23,459	22,904	20,977	19,851	17,734	20,975	257,272
H26		19,146	21,806	20,900	21,787	19,693	21,902	21,201	21,973	20,589	19,776	18,574	20,394	247,741
H27		18,685	19,929	20,403	19,392	19,477	20,172	22,075	20,658	19,379	18,338	18,598	19,206	236,312
H27/H26		98%	91%	98%	89%	99%	92%	104%	94%	94%	93%	100%	94%	95%

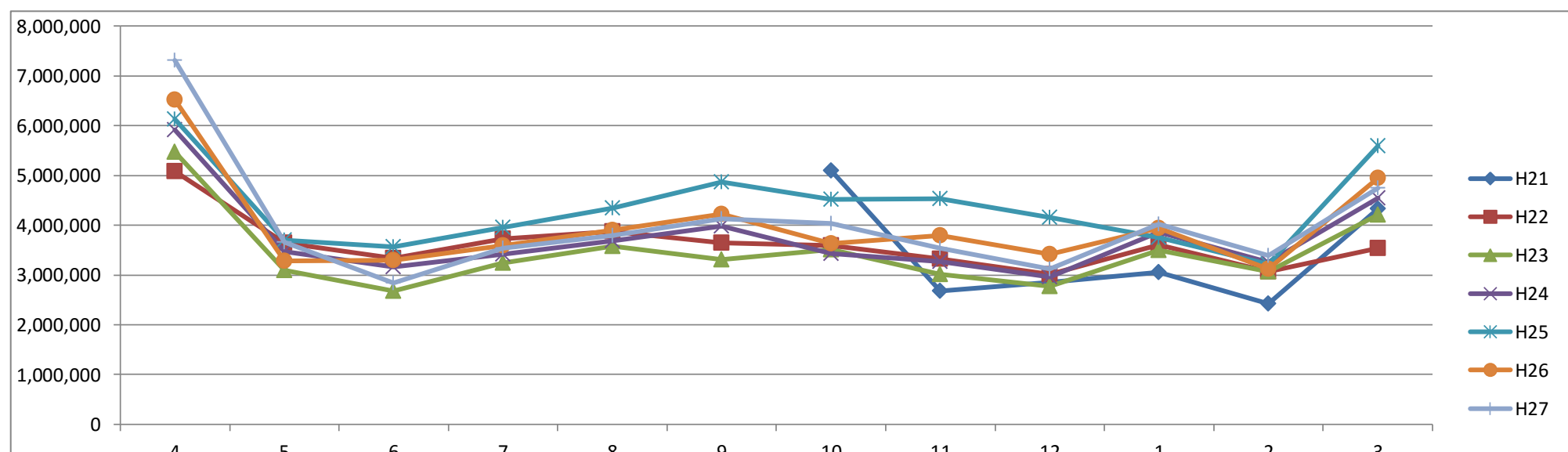


【H27の動向】

②運賃収入

(円)

年	月	4	5	6	7	8	9	10	11	12	1	2	3	合計
H21								5,101,880	2,676,716	2,846,507	3,047,918	2,425,760	4,332,372	20,431,153
H22		5,086,752	3,643,103	3,340,064	3,722,601	3,877,129	3,639,753	3,598,034	3,325,253	3,012,037	3,598,726	3,073,724	3,532,161	43,449,337
H23		5,473,799	3,090,567	2,679,182	3,240,882	3,584,026	3,310,015	3,511,435	3,011,204	2,771,937	3,501,871	3,071,706	4,207,125	41,453,749
H24		5,915,355	3,468,936	3,156,363	3,421,185	3,685,976	3,982,635	3,431,050	3,262,808	2,957,821	3,862,069	3,253,789	4,544,056	44,942,043
H25		6,123,161	3,704,070	3,558,616	3,957,578	4,347,000	4,869,045	4,512,541	4,528,891	4,148,977	3,755,477	3,216,002	5,595,046	52,316,404
H26		6,515,550	3,278,578	3,294,589	3,592,045	3,895,616	4,228,863	3,637,661	3,792,415	3,420,427	3,934,376	3,123,303	4,943,700	47,657,123
H27		7,313,447	3,658,869	2,841,246	3,541,080	3,797,265	4,128,265	4,038,024	3,537,307	3,127,238	4,023,096	3,389,082	4,740,519	48,135,438
H27/H26		112%	112%	86%	99%	97%	98%	111%	93%	91%	102%	109%	96%	101%

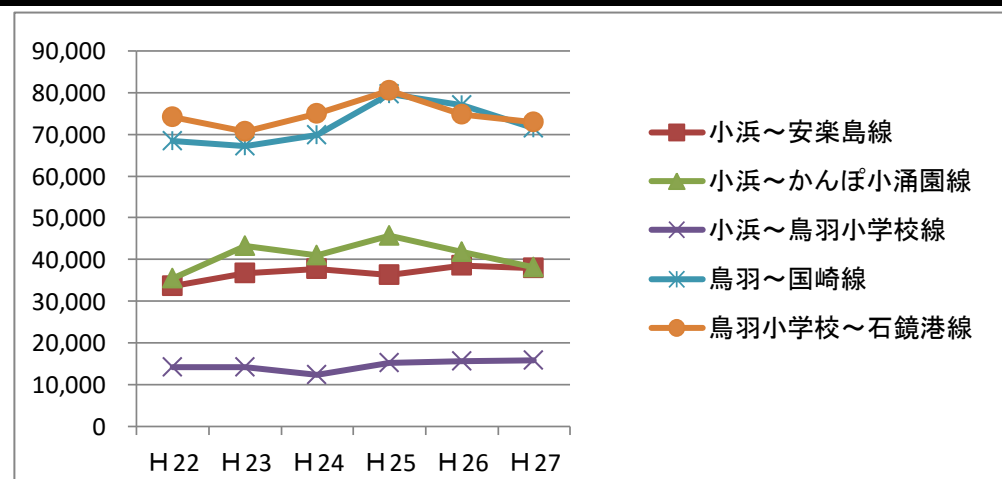


【H27の動向】

③路線別乗車人員 I

(人)

区分	H22	H23	H24	H25	H26	H27	合計	前年比H27/H26	前年比H26/H25	前年比H25/H24
小浜～安楽島線	33,590	36,696	37,643	36,307	38,608	37,926	144,236	98%	106%	96%
小浜～かんぼ小涌園線	35,546	43,293	40,981	45,604	41,816	38,173	165,424	91%	92%	111%
小浜～鳥羽小学校線	14,232	14,256	12,328	15,244	15,593	15,806	56,060	101%	102%	124%
鳥羽～国崎線	68,495	67,222	69,772	79,685	77,077	71,543	285,174	93%	97%	114%
鳥羽小学校～石鏡港線	74,186	70,575	74,965	80,432	74,647	72,864	300,158	98%	93%	107%
合計	226,049	232,042	235,689	257,272	247,741	236,312	951,052	95%	96%	109%



【H27の動向】

④路線別乗車人員Ⅱ

(1)小浜～安楽島線

(人)

年	月	4	5	6	7	8	9	10	11	12	1	2	3	合計
H22		2,612	2,760	2,773	3,439	3,482	2,858	2,935	2,737	2,752	2,453	2,385	2,404	33,590
H23		2,710	3,195	3,131	3,528	3,865	2,965	3,153	2,960	2,994	2,674	2,577	2,944	36,696
H24		2,827	3,144	3,071	3,513	3,739	2,913	3,399	3,104	3,266	3,009	2,705	2,953	37,643
H25		2,648	2,892	2,995	3,459	4,180	3,020	2,988	2,988	3,036	2,700	2,386	3,015	36,307
H26		2,772	3,059	3,258	3,762	3,603	3,215	3,267	3,187	3,311	3,167	2,824	3,183	38,608
H27		2,881	3,014	3,240	3,203	3,601	3,157	3,454	3,167	3,238	3,015	2,849	3,107	37,926
H27/H26		104%	99%	99%	85%	100%	98%	106%	99%	98%	95%	101%	98%	98%

(2)小浜～かんぼ小涌園線

(人)

年	月	4	5	6	7	8	9	10	11	12	1	2	3	合計
H22		2,987	2,884	2,489	3,200	3,047	2,917	3,256	3,264	2,972	3,098	2,695	2,737	35,546
H23		3,248	3,652	3,539	3,804	3,941	3,311	4,144	3,673	3,388	3,613	3,465	3,515	43,293
H24		3,608	4,013	3,382	3,471	3,284	3,080	3,804	3,493	3,177	3,465	2,904	3,300	40,981
H25		3,354	4,147	3,548	3,881	4,756	3,711	4,303	4,220	3,553	3,545	2,767	3,819	45,604
H26		3,693	3,707	3,264	3,458	3,462	3,424	3,565	3,860	3,409	3,455	3,012	3,507	41,816
H27		3,251	3,546	3,150	3,149	3,567	3,362	3,706	3,329	2,818	2,745	2,601	2,949	38,173
H27/H26		88%	96%	97%	91%	103%	98%	104%	86%	83%	79%	86%	84%	91%

(3)小浜～鳥羽小学校線

(人)

年	月	4	5	6	7	8	9	10	11	12	1	2	3	合計
H22		1,312	1,353	1,479	1,057	243	1,401	1,464	1,322	1,189	1,063	1,309	1,040	14,232
H23		1,274	1,372	1,549	1,042	412	1,392	1,426	1,351	1,128	992	1,252	1,066	14,256
H24		932	1,214	1,295	1,062	281	1,090	1,252	1,197	954	986	1,144	921	12,328
H25		1,267	1,562	1,555	1,223	189	1,415	1,518	1,532	1,195	1,303	1,341	1,144	15,244
H26		1,336	1,568	1,506	1,118	176	1,494	1,574	1,468	1,351	1,285	1,417	1,300	15,593
H27		1,458	1,534	1,798	1,105	223	1,264	1,638	1,587	1,313	1,257	1,503	1,126	15,806
H27/H26		109%	98%	119%	99%	127%	85%	104%	108%	97%	98%	106%	87%	101%

(4)鳥羽～国崎線

(人)

年	月	4	5	6	7	8	9	10	11	12	1	2	3	合計
H22		4,381	6,972	6,021	6,356	5,964	6,444	6,206	5,980	5,244	5,285	5,031	4,611	68,495
H23		4,727	5,896	5,264	5,571	5,922	6,081	6,135	5,875	5,167	5,319	5,239	6,026	67,222
H24		5,308	6,174	5,549	5,870	5,947	6,233	6,363	5,759	5,292	5,793	5,396	6,088	69,772
H25		5,828	6,801	6,556	7,180	7,291	7,830	7,483	7,140	6,388	5,650	5,264	6,274	79,685
H26		5,468	7,141	6,432	6,517	6,344	7,590	6,733	7,316	6,104	5,909	5,476	6,047	77,077
H27		5,267	5,800	5,908	5,555	6,076	6,611	6,943	6,539	5,840	5,653	5,737	5,614	71,543
H27/H26		96%	81%	92%	85%	96%	87%	103%	89%	96%	96%	105%	93%	93%

(5)鳥羽小学校～石鏡港線

(人)

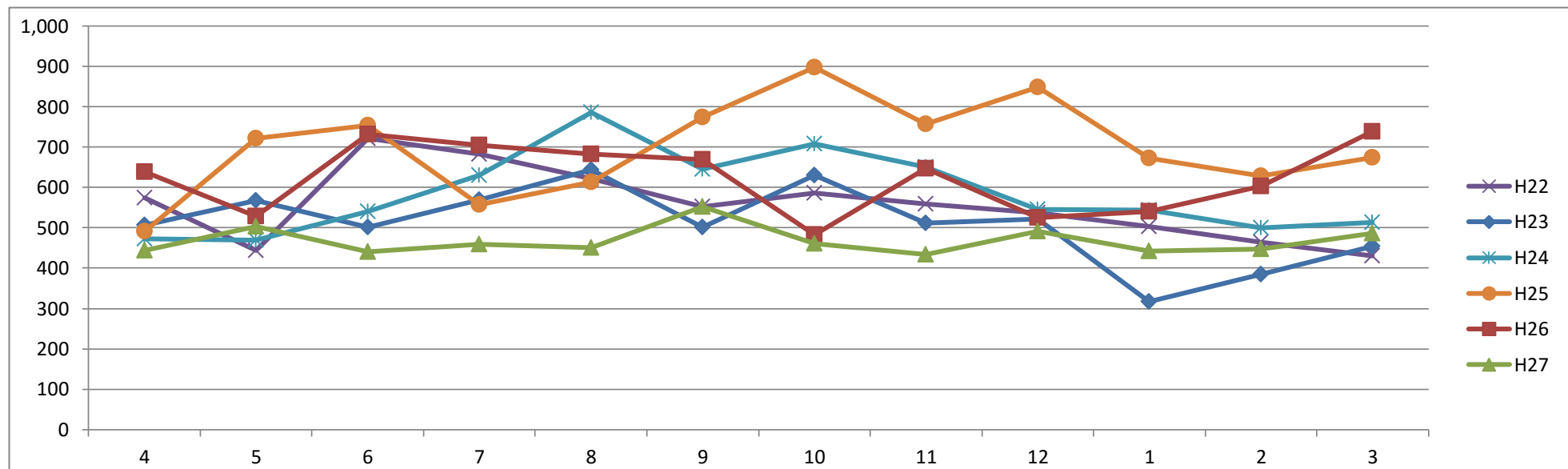
年	月	4	5	6	7	8	9	10	11	12	1	2	3	合計
H22		6,204	6,641	7,024	6,648	6,148	6,384	6,477	6,197	5,822	5,568	5,669	5,404	74,186
H23		5,750	6,036	6,367	5,565	5,544	6,155	6,215	6,019	5,730	5,434	5,996	5,764	70,575
H24		5,635	6,697	6,391	6,046	5,229	6,113	6,767	6,692	6,436	6,163	6,193	6,603	74,965
H25		6,229	7,176	6,877	7,077	6,126	6,599	7,167	7,024	6,805	6,653	5,976	6,723	80,432
H26		5,877	6,331	6,440	6,932	6,108	6,179	6,062	6,142	6,414	5,960	5,845	6,357	74,647
H27		5,828	6,035	6,307	6,380	6,010	5,778	6,334	6,036	6,170	5,668	5,908	6,410	72,864
H27/H26		99%	95%	98%	92%	98%	94%	104%	98%	96%	95%	101%	101%	98%

⑤乗車券別利用(販売)枚数

(1)乗継割引券利用枚数

(枚)

年 \ 月	4	5	6	7	8	9	10	11	12	1	2	3	合計
H22	574	444	722	682	622	553	587	559	537	503	465	431	6,679
H23	507	568	502	570	644	502	630	512	522	317	384	454	6,112
H24	473	469	541	630	786	645	709	650	546	544	500	513	7,006
H25	491	722	754	558	613	775	897	757	849	673	629	675	8,393
H26	639	529	732	704	682	669	483	647	526	540	604	738	7,493
H27	444	503	440	459	451	553	461	434	491	442	448	486	5,612
H27/H26	69%	95%	60%	65%	66%	83%	95%	67%	93%	82%	74%	66%	75%

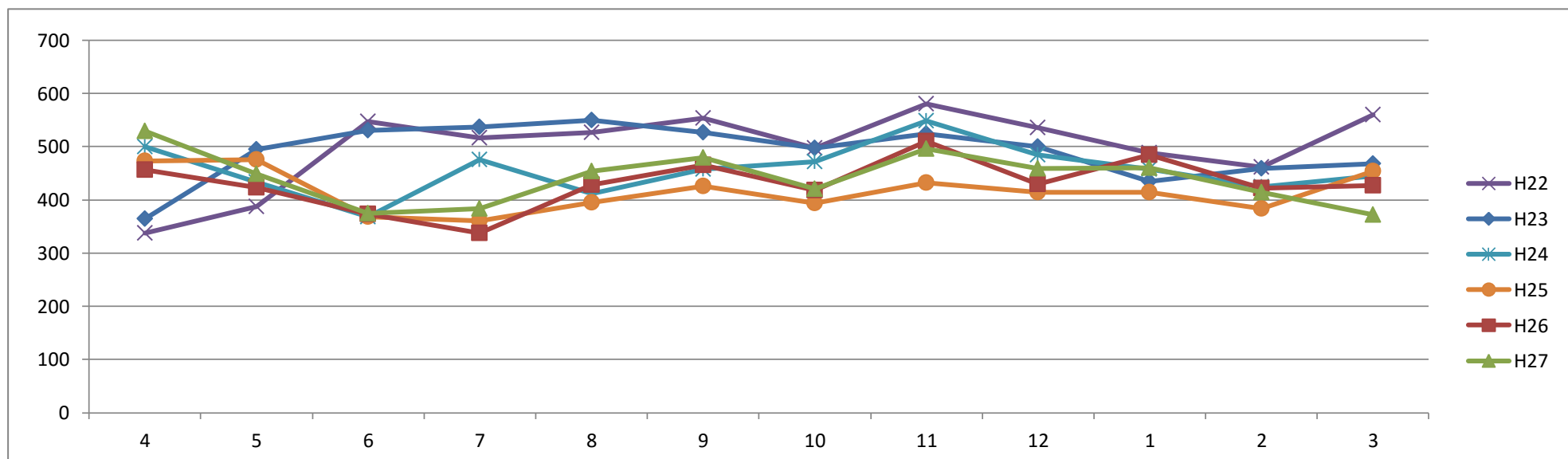


【H26の動向】

(2)回数券(ハッピーチケット)販売枚数

(枚)

年 \ 月	4	5	6	7	8	9	10	11	12	1	2	3	合計
H22	337	388	547	516	527	554	497	581	536	488	461	560	5,992
H23	364	495	530	537	550	527	497	524	500	435	459	468	5,886
H24	500	434	368	476	412	458	472	549	484	458	424	445	5,480
H25	473	476	368	360	395	426	394	432	414	414	383	454	4,989
H26	456	423	373	338	428	465	418	510	429	485	422	427	5,174
H27	529	449	375	384	454	480	421	496	459	460	414	372	5,293
H27/H26	116%	106%	101%	114%	106%	103%	101%	97%	107%	95%	98%	87%	102%

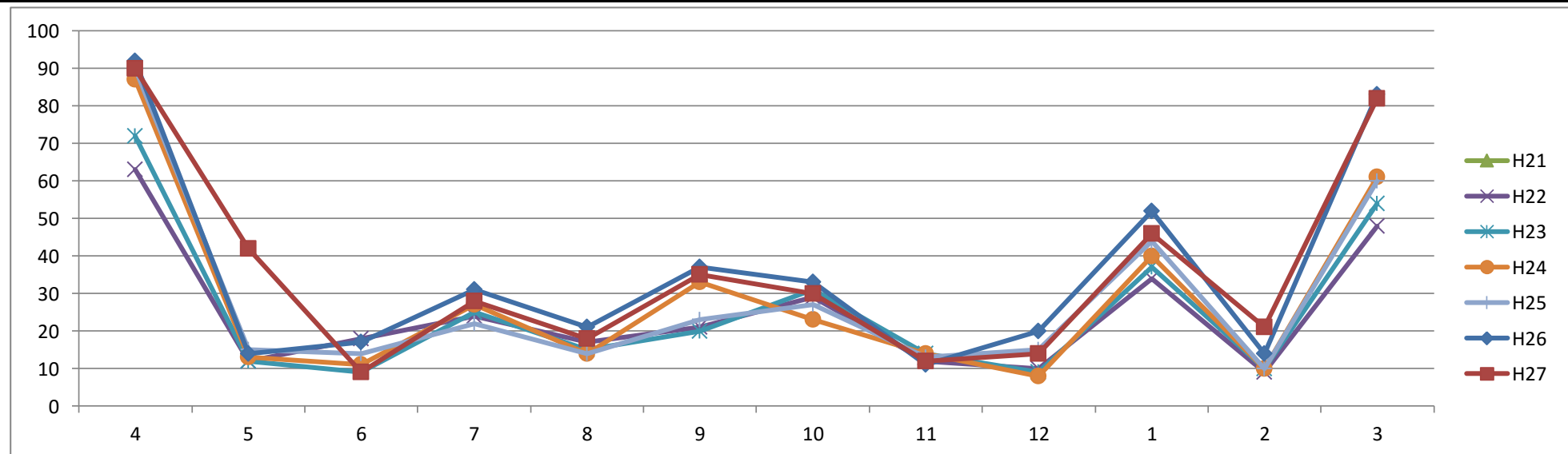


【H26の動向】

(3)定期券販売枚数

(枚)

年 \ 月	4	5	6	7	8	9	10	11	12	1	2	3	合計
H21													0
H22	63	12	18	24	17	21	29	12	10	34	9	48	297
H23	72	12	9	25	15	20	31	14	9	37	10	54	308
H24	87	13	11	27	14	33	23	14	8	40	10	61	341
H25	90	15	14	22	14	23	27	13	15	44	10	60	347
H26	92	14	17	31	21	37	33	11	20	52	14	83	425
H27	90	42	9	28	18	35	30	12	14	46	21	82	427
H27/H26	98%	300%	53%	90%	86%	95%	91%	109%	70%	88%	150%	99%	100%

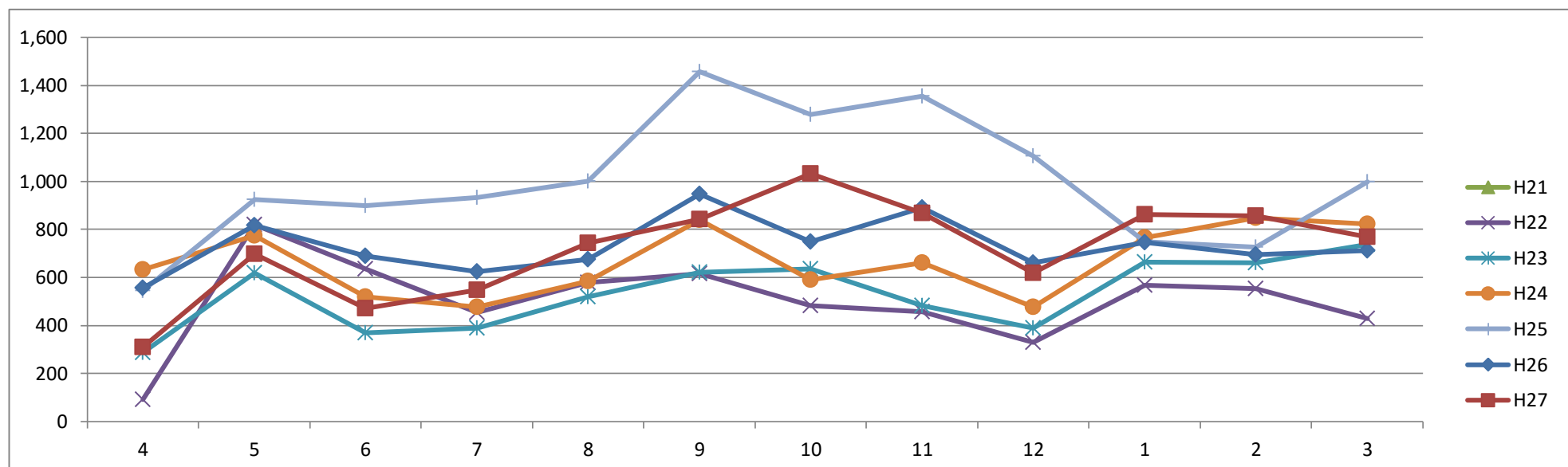


【H26の動向】

(4) 周遊券販売枚数

(枚)

年 \ 月	4	5	6	7	8	9	10	11	12	1	2	3	合計
H21													0
H22	92	820	634	455	579	616	481	456	329	566	554	428	6,010
H23	287	617	369	390	519	621	636	481	389	665	661	736	6,371
H24	632	775	519	476	584	839	591	661	476	767	849	823	7,992
H25	546	925	899	934	1,002	1,458	1,279	1,354	1,107	750	727	998	11,979
H26	557	818	690	625	676	947	750	889	661	745	694	711	8,763
H27	309	699	471	548	742	843	1,031	869	619	862	856	769	8,618
H27/H26	55%	85%	68%	88%	110%	89%	137%	98%	94%	116%	123%	108%	98%



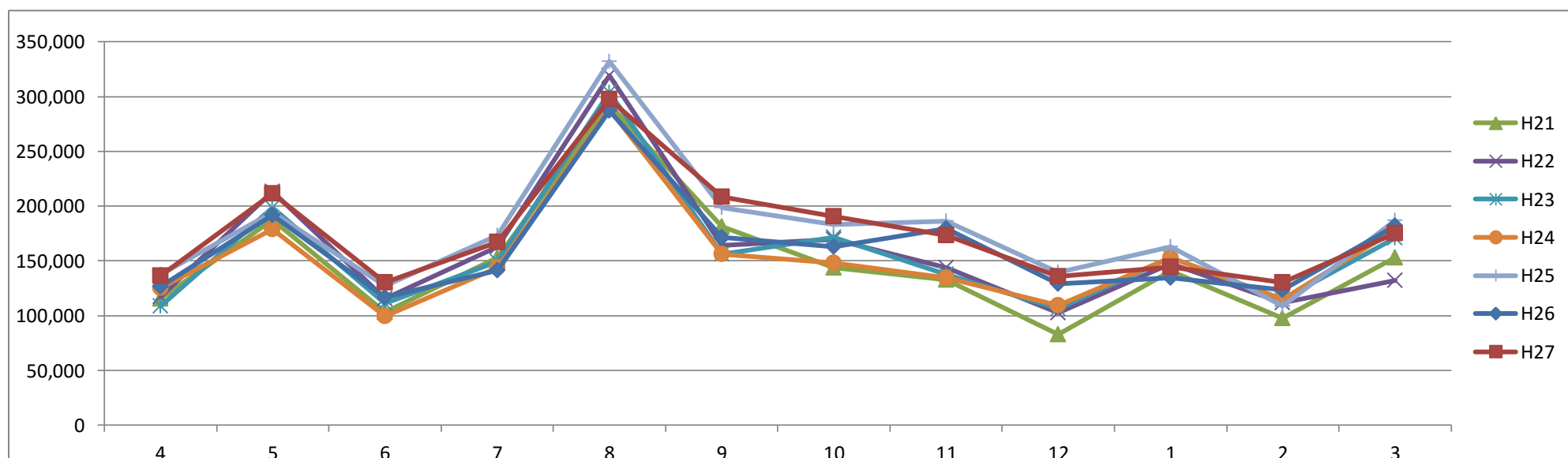
【H26の動向】

(参考) 観光客動向(観光施設:ミキモト真珠島、鳥羽水族館、志摩マリンレジャー、海の博物館、鳥羽カントリー、パールロード展望台、海女文化資料館、神明神社、古民家海女の家、鳥羽マルシェ)

(人)

年 \ 月	4	5	6	7	8	9	10	11	12	1	2	3	合計
H21	115,454	187,531	103,362	153,313	292,884	181,218	143,753	133,006	83,079	140,915	97,401	152,805	1,784,721
H22	117,099	213,061	115,508	163,153	319,061	164,261	169,859	143,950	102,518	147,662	111,942	132,193	1,900,267
H23	109,067	198,458	111,498	149,608	303,764	156,007	171,631	137,837	106,317	153,098	114,904	170,628	1,882,817
H24	125,677	178,757	99,436	144,071	288,312	156,124	148,126	134,490	109,261	152,875	114,928	178,080	1,830,137
H25	137,766	193,972	127,506	173,215	332,068	198,740	183,039	185,997	139,731	162,765	108,786	186,852	2,130,437
H26	126,670	191,886	116,777	141,580	286,918	171,805	162,955	179,785	129,020	134,629	123,613	182,207	1,947,845
H27	136,734	211,376	130,012	166,946	297,511	208,680	190,463	173,378	135,916	144,182	130,556	175,044	2,100,798
H27/H26	108%	110%	111%	118%	104%	121%	117%	96%	105%	107%	106%	96%	108%

※H27から対象施設に鳥羽マルシェが追加。鳥羽カントリークラブはH27.8.1をもって閉鎖。



(参考②) いきいきでかけ券利用枚数

(枚)

年 \ 月	4	5	6	7	8	9	10	11	12	1	2	3	合計
H24			6,101	5,282	4,007	2,880	2,516	2,138	2,012	1,739	1,430	2,438	30,543
H25			5,759	5,541	4,180	3,298	3,186	2,312	2,100	1,699	1,835	2,788	32,698
H26			4,556	5,027	3,712	3,650	3,336	2,484	1,983	1,787	1,926	2,770	31,231
H27			4,946	5,047	4,115	3,236	3,693	2,477	2,458	2,288	2,274	2,714	33,248
H27/H26	#DIV/0!	#DIV/0!	109%	100%	111%	89%	111%	100%	124%	128%	118%	98%	106%

